

The NEW ENGLAND JOURNAL of MEDICINE

ESTABLISHED IN 1812

APRIL 23, 2009

VOL. 360 NO. 17

Coronary Bypass Surgery with or without Surgical Ventricular Reconstruction

Robert H. Jones, M.D., Eric J. Velazquez, M.D., Robert E. Michler, M.D., George Sopko, M.D., Jae K. Oh, M.D.,
Christopher M. O'Connor, M.D., James A. Hill, M.D., Lorenzo Menicanti, M.D., Zygmunt Sadowski, M.D.,
Patrice Desvigne-Nickens, M.D., Jean-Lucien Rouleau, M.D., and Kerry L. Lee, Ph.D.,
for the STICH Hypothesis 2 Investigators*

ABSTRACT

BACKGROUND

Surgical ventricular reconstruction is a specific procedure designed to reduce left ventricular volume in patients with heart failure caused by coronary artery disease. We conducted a trial to address the question of whether surgical ventricular reconstruction added to coronary-artery bypass grafting (CABG) would decrease the rate of death or hospitalization for cardiac causes, as compared with CABG alone.

METHODS

Between September 2002 and January 2006, a total of 1000 patients with an ejection fraction of 35% or less, coronary artery disease that was amenable to CABG, and dominant anterior left ventricular dysfunction that was amenable to surgical ventricular reconstruction were randomly assigned to undergo either CABG alone (499 patients) or CABG with surgical ventricular reconstruction (501 patients). The primary outcome was a composite of death from any cause and hospitalization for cardiac causes. The median follow-up was 48 months.

RESULTS

Surgical ventricular reconstruction reduced the end-systolic volume index by 19%, as compared with a reduction of 6% with CABG alone. Cardiac symptoms and exercise tolerance improved from baseline to a similar degree in the two study groups. However, no significant difference was observed in the primary outcome, which occurred in 292 patients (59%) who were assigned to undergo CABG alone and in 289 patients (58%) who were assigned to undergo CABG with surgical ventricular reconstruction (hazard ratio for the combined approach, 0.99; 95% confidence interval, 0.84 to 1.17; $P=0.90$).

CONCLUSIONS

Adding surgical ventricular reconstruction to CABG reduced the left ventricular volume, as compared with CABG alone. However, this anatomical change was not associated with a greater improvement in symptoms or exercise tolerance or with a reduction in the rate of death or hospitalization for cardiac causes. (ClinicalTrials.gov number, NCT00023595.)

From the Duke Clinical Research Institute, Duke University Medical Center, Durham, NC (R.H.J., E.J.V., C.M.O., K.L.L.); the Montefiore Medical Center—Albert Einstein College of Medicine, Bronx, NY (R.E.M.); the National Heart, Lung, and Blood Institute, National Institutes of Health, Bethesda, MD (G.S., P.D.-N.); the Mayo Clinic, Rochester, MN (J.K.O.); the University of Florida College of Medicine, Gainesville (J.A.H.); San Donato Hospital, Milan (L.M.); National Institute of Cardiology, Warsaw, Poland (Z.S.); and Institut de Cardiologie de Montréal, University of Montreal, Montreal (J.-L.R.). Address reprint requests to Dr. Jones at P.O. Box 2986, Duke University Medical Center, Durham, NC 27710, or at jones060@mc.duke.edu.

*A complete list of investigators participating in the Hypothesis 2 component of the Surgical Treatment for Ischemic Heart Failure (STICH) trial is provided in the Supplementary Appendix, available with the full text of this article at NEJM.org.

This article (10.1056/NEJMoa0900559) was published at NEJM.org on March 29, 2009.

N Engl J Med 2009;360:1705-17.
Copyright © 2009 Massachusetts Medical Society.

CORONARY ARTERY DISEASE IS THE PRE-
dominant cause of heart failure, which is a
major cause of death and disability through-
out the world. Evidence-based medical therapy has
been shown to reduce symptoms and increase sur-
vival in patients with heart failure and coronary
artery disease.¹ In addition, selected patients may
benefit from surgical revascularization by means
of coronary-artery bypass grafting (CABG), espe-
cially if the coronary anatomy is suitable for such
surgery and if there is evidence of myocardial vi-
ability.^{2,3}

The reduction in left ventricular function that
can occur after myocardial infarction is typically
accompanied by left ventricular remodeling, a pro-
cess that includes left ventricular enlargement and
changes in chamber geometry. Left ventricular
remodeling is correlated with progression of heart
failure and a poor prognosis,^{4,5} and the benefi-
cial effects of therapeutic agents such as angio-
tensin-converting-enzyme (ACE) inhibitors and
beta-blockers are associated with their effect on
remodeling.^{4,6-9} These findings have generated
considerable interest in the possibility that a sur-
gical approach to remodeling through left ven-
tricular volume reduction could improve outcomes
for patients with coronary artery disease and heart
failure.¹⁰

Surgical ventricular reconstruction is a specific
surgical procedure developed for the management
of heart failure with left ventricular remodeling
caused by coronary artery disease.¹¹ This opera-
tion has been shown to reduce the left ventricu-
lar volume, increase the ejection fraction, and im-
prove ventricular function.^{12,13} On the basis of a
small, nonrandomized, case-control study,¹⁴ it has
been suggested that surgical ventricular recon-
struction that is performed together with CABG
may reduce the rate of hospitalization and im-
prove ventricular function to a greater degree than
CABG alone.

The Surgical Treatment for Ischemic Heart Fail-
ure (STICH) trial was designed to define the role
of cardiac surgery in the treatment of patients with
heart failure and coronary artery disease.^{15,16} One
of the two major hypotheses of this trial (Hypothesis 2)
was that surgical ventricular reconstruction,
when added to CABG, would decrease the rate of
death or hospitalization for a cardiac event, as com-
pared with CABG alone.

METHODS

STUDY DESIGN

We conducted a multicenter, nonblinded, random-
ized trial at 127 clinical sites in 26 countries.¹⁵ The
trial was sponsored by the National Heart, Lung,
and Blood Institute (NHLBI) of the National In-
stitutes of Health. Additional support was provided
by Abbott Laboratories, Chase Medical, and CV
Therapeutics, which had no role in the design, con-
duct, or reporting of the trial. The trial protocol
was designed by the authors in collaboration with
the NHLBI and was approved by the appropriate
institutional review board or ethics committee at
each study center. Trial operations, site manage-
ment and monitoring, and data collection and
analysis were coordinated by the Duke Clinical
Research Institute. Oversight was provided by an
independent data and safety monitoring board.
A clinical events committee whose members were
unaware of study-group assignments adjudicated
primary outcome events. The authors wrote the
manuscript and vouch for the completeness and
accuracy of the data and the analyses.

SELECTION OF PATIENTS AND RANDOMIZATION

Patients were eligible for enrollment if they had
coronary artery disease that was amenable to CABG
and if they had a left ventricular ejection fraction
of 35% or less (Fig. 1). Exclusion criteria were a
recent myocardial infarction, a need for aortic-valve
replacement, a planned percutaneous coronary in-
tervention (PCI), and coexisting noncardiac dis-
ease resulting in a life expectancy of less than
3 years. All patients provided written informed
consent.

After initial determination of overall eligibil-
ity for the trial, patients were evaluated to deter-
mine which component of the STICH program
was appropriate for them on the basis of suitable
therapeutic options for that patient (medical ther-
apy alone, CABG alone, or CABG plus surgical
ventricular reconstruction) (Fig. 1). Patients who
had stenosis of the left main coronary artery of
50% or more or who had angina of Canadian Car-
diovascular Society (CCS) class III or IV while re-
ceiving medical therapy were not eligible for
medical therapy alone. All patients underwent car-
diac imaging for assessment of left ventricular
function and wall motion. Patients who were

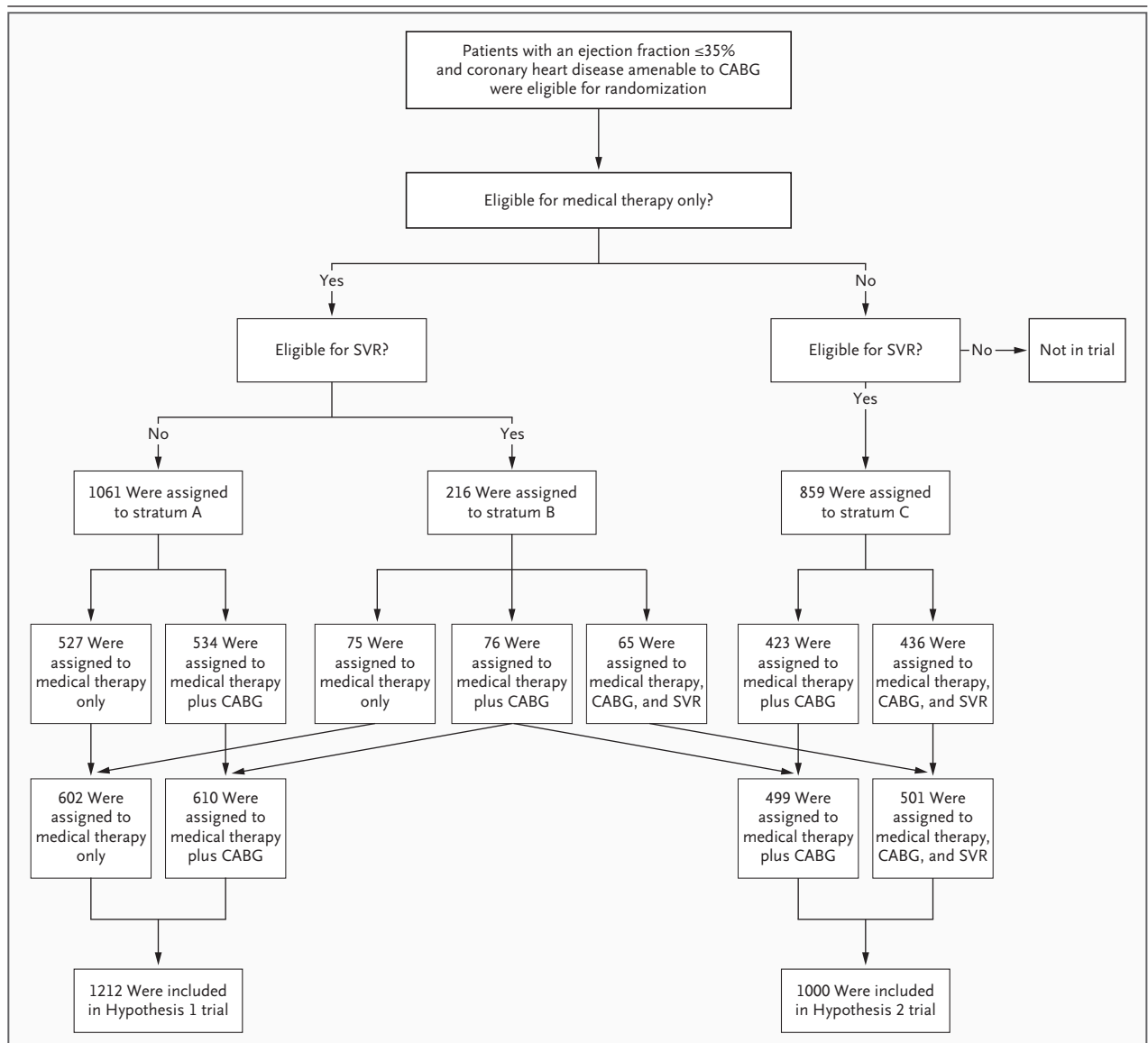


Figure 1. Enrollment and Outcomes in the STICH Hypothesis 1 and Hypothesis 2 Trials.

Eligible patients who had an ejection fraction of 35% or less and coronary artery disease that was amenable to coronary-artery bypass grafting (CABG) were stratified for randomization on the basis of protocol criteria regarding eligibility for medical therapy and for surgical ventricular reconstruction (SVR). Patients who were eligible for medical therapy with or without CABG but not for CABG with SVR were randomly assigned within stratum A. Data from these patients are being collected in the ongoing Hypothesis 1 component of the Surgical Treatment of Ischemic Heart Failure (STICH) trial. Patients who were eligible for medical therapy with or without CABG or for CABG with SVR were randomly assigned within stratum B. Patients who were not eligible for medical therapy alone but who were eligible for CABG or CABG with SVR were randomly assigned within stratum C. Patients in stratum B and stratum C who were then randomly assigned to undergo CABG with or without SVR are included in the 1000-patient cohort that was evaluated in the Hypothesis 2 trial.

found to have dominant anterior akinesia or dyskinesia of the left ventricle were considered to have disease that was amenable to surgical ventricular reconstruction.

Using these guidelines, physicians who were

responsible for the conduct of the trial selected the randomization stratum for each patient that appeared to offer treatment possibilities with equivalent potential risks and benefits. Permuted-block randomization was used, with stratification

according to clinical site and according to whether the patient was a candidate for SVR, for medical therapy alone, or for both (Fig. 1).

The resulting trial included two major components. Patients in the Hypothesis 1 component were randomly assigned to receive either medical therapy alone or medical therapy plus CABG. The Hypothesis 1 component of the trial is ongoing. Patients in the Hypothesis 2 component were randomly assigned to receive either medical therapy plus CABG or medical therapy plus CABG and surgical ventricular reconstruction. The results of the Hypothesis 2 component are the subject of this report.

TREATMENT

Guideline-based recommendations for drug and device use were emphasized for all patients. The lead cardiologist at each site was responsible for monitoring to ensure that ACE inhibitors, angiotensin-receptor blockers, beta-blockers, aldosterone antagonists, antiplatelet agents, statins, diuretics, digitalis, pacemakers (for bradyarrhythmias or for cardiac resynchronization), and implantable cardioverter-defibrillators were used properly throughout the study.

Cardiac surgeons were individually certified to participate in the trial if they met prespecified performance criteria. For CABG certification, surgeons were required to provide data on at least 25 patients with a left ventricular ejection fraction of 40% or less who underwent CABG, with a death rate of 5% or less. Education in the operative technique for surgical ventricular reconstruction and perioperative management was made available before patient enrollment and during investigator meetings. Certification of individual surgeons for performing surgical ventricular reconstruction required evidence of a consistent postoperative decrease in left ventricular volume in five consecutive patients who survived the operation.

During CABG, arterial grafting for stenosis of the left anterior descending coronary artery was required for all patients without specific contraindications. The use of additional arterial conduits supplemented by vein grafts was recommended for revascularization of all major vessels with clinically significant stenoses. Concurrent mitral-valve surgery for regurgitation was performed at the discretion of the surgeon.

The technique of surgical ventricular reconstruction has been described previously.^{11,12,17} For patients who were assigned to undergo surgical

ventricular reconstruction, this component of the operation was most commonly performed during a single period of cardioplegic arrest after construction of bypass grafts. However, the procedure could also be performed with the heart beating in order to facilitate identification of the noncontractile zone of scarring. In this procedure, after an anterior left ventriculotomy is centered in the zone of anterior asynergy, a suture is placed in the interior of the ventricle to encircle the scar at the boundary between the akinetic and viable tissue. Tightening of this suture brings the healthy portions of the ventricular walls together. Visual inspection and palpation facilitate the judgment of whether a patch is needed to optimize the chamber size without deforming the left ventricle during closure of the ventriculotomy.

PRIMARY AND SECONDARY OUTCOMES

Major perioperative events and specified end points were recorded at discharge or at 30 days for patients remaining in the hospital. Patients were evaluated at 4-month intervals after randomization during the first year and thereafter at 6-month intervals.

Symptoms of angina and heart failure were assessed at each follow-up visit. All patients who were able to do so performed a 6-minute walk test at baseline, at 4 months, and annually thereafter. Left ventricular volumes and function were assessed with the use of echocardiography, cardiac magnetic resonance imaging, or single photon emission computed tomography at baseline, at 4 months, and at 2 years.

The primary outcome was the time to death from any cause or hospitalization for cardiac causes. Secondary outcomes included death from any cause at 30 days, hospitalization for any cause and for cardiovascular causes, myocardial infarction, and stroke.

STATISTICAL ANALYSIS

We calculated that we would need to enroll 1000 patients in the trial for a power of 90% to detect a 20% reduction in the relative risk of death or hospitalization for cardiac causes, assuming a 3-year event rate in the CABG-only group of 45% or more and allowing for a crossover rate of up to 20%.

All major study-group comparisons were performed according to the intention-to-treat principle. Supplementary analyses tabulated postoperative complications and clinical events occurring within 30 days, according to the type of opera-

tion that was performed. All statistical tests were two-tailed. Cumulative event rates from the time of randomization were calculated with the use of the Kaplan–Meier method.¹⁸ The log-rank test for time-to-event data was used for the statistical comparison of study groups with respect to the primary outcome and overall mortality.¹⁹ Hazard ratios with associated 95% confidence intervals were derived with the use of the Cox proportional-hazards model.²⁰ The Cox model was also used to assess the consistency of treatment effects by testing for interactions between the type of surgery and prespecified baseline characteristics.

Eight interim analyses of the data were performed and reviewed by the data and safety monitoring board. Interim comparisons between study groups were monitored with the use of two-sided, symmetric O'Brien–Fleming boundaries generated with the alpha-spending-function approach to group-sequential testing.^{21,22} A P value of 0.05 or less was considered to indicate statistical significance. Because of the sequential monitoring, the level of significance that was required for the primary analysis at the completion of the study was 0.04.

RESULTS

STUDY POPULATION

Between July 24, 2002, and May 5, 2007, 2136 patients were enrolled in the overall STICH trial (Fig. 1). Of these patients, 1000 were enrolled in the Hypothesis 2 component at 96 clinical sites between September 12, 2002, and January 24, 2006, and were randomly assigned to undergo either CABG alone (499 patients) or CABG with surgical ventricular reconstruction (501 patients), with follow-up continued through December 31, 2008. No significant differences between the two study groups were observed in baseline demographic or clinical characteristics (Table 1). The median age was 62 years, and 147 of the 1000 patients were women. The median left ventricular ejection fraction was 28%. The median end-systolic volume index was 82 ml per square meter of body-surface area. Multivessel coronary artery disease was present in 913 patients; 197 patients had stenosis of the left main coronary artery.

SURGICAL PROCEDURES

Of the 499 patients who were assigned to undergo CABG alone, 463 (93%) underwent the assigned procedure; 9 did not undergo any surgery, and 27

underwent CABG with surgical ventricular reconstruction (Table 1 in the Supplementary Appendix, available with the full text of this article at NEJM.org). Of the 501 patients who were assigned to undergo CABG with surgical ventricular reconstruction, 454 (91%) underwent the assigned procedure; 12 patients did not undergo any surgery, and 35 patients underwent CABG without surgical ventricular reconstruction.

Of the 979 patients who underwent surgery, the procedure was elective in 819 patients (84%), urgent in 127 (13%), performed for ongoing ischemia in 21 (2%), and performed under emergency conditions in 11 (1%) (Table 2 in the Supplementary Appendix). Mitral-valve surgery was performed in 178 patients (18%) undergoing surgery. More arterial conduits were used in patients undergoing CABG alone than in patients undergoing CABG with surgical ventricular reconstruction ($P=0.008$). Surgical ventricular reconstruction added a median of 27 minutes of cardiopulmonary bypass time to the CABG procedure ($P<0.001$). The duration of aortic cross-clamping, the time to endotracheal extubation, and the duration of postoperative hospitalization were longer for patients undergoing CABG with surgical ventricular reconstruction ($P<0.001$ for all comparisons).

FOLLOW-UP

The median follow-up for all surviving patients was 48 months (minimum, 30). Only four patients withdrew consent, and six patients were lost to follow-up before the last visit. Of the 1000 patients, 990 (99%) underwent complete follow-up that began at randomization and concluded between August 1 and December 31, 2008.

LEFT VENTRICULAR VOLUME

A core-laboratory quantitative assessment of the end-systolic volume index on echocardiography was performed at baseline and at 4 months in a total of 373 patients (212 patients who were assigned to undergo CABG alone and 161 who were assigned to undergo CABG with surgical ventricular reconstruction). The mean end-systolic volume index in patients assigned to undergo CABG alone decreased by an average of 5 ml per square meter, from 82 to 77 ml per square meter (a reduction of 6%). For patients who were assigned to undergo CABG with surgical ventricular reconstruction, the average decrease was 16 ml per square meter, from 83 to 67 ml per square meter (a reduction of 19%) (Fig. 1 in the Supplementary Appendix). The

Table 1. Baseline Characteristics of the Patients.*

Variable	CABG Alone (N = 499)	CABG with Surgical Ventricular Reconstruction (N = 501)
Demographic characteristics		
Age — yr		
Median	62	62
Interquartile range	54–69	55–69
Female sex — no. (%)	78 (16)	69 (14)
Race — no. (%)†		
White	451 (90)	460 (92)
Black or other	48 (10)	41 (8)
Body-mass index		
Median	27	27
Interquartile range	25–30	24–30
Medical history		
Myocardial infarction — no. (%)	435 (87)	437 (87)
Hyperlipidemia — no. (%)	367 (74)	351 (70)
Hypertension — no. (%)	289 (58)	296 (59)
Diabetes — no. (%)	173 (35)	171 (34)
Current smoker — no. (%)	117 (23)	100 (20)
Previous percutaneous coronary intervention — no. (%)	100 (20)	95 (19)
Chronic renal insufficiency — no. (%)	42 (8)	43 (9)
Stroke — no. (%)	28 (6)	28 (6)
Previous CABG — no. (%)	15 (3)	9 (2)
Current Canadian Cardiovascular Society angina class — no. (%)		
No angina	121 (24)	128 (26)
I	36 (7)	35 (7)
II	94 (19)	94 (19)
III	203 (41)	205 (41)
IV	45 (9)	39 (8)
Current New York Heart Association heart failure class — no. (%)		
I	36 (7)	50 (10)
II	222 (44)	207 (41)
III	210 (42)	218 (44)
IV	31 (6)	26 (5)
Blood pressure — mm Hg		
Systolic		
Median	120	120
Interquartile range	110–130	110–130
Diastolic		
Median	71	74
Interquartile range	65–80	66–80
Pulse — beats/min		
Median	70	72
Interquartile range	64–80	64–80

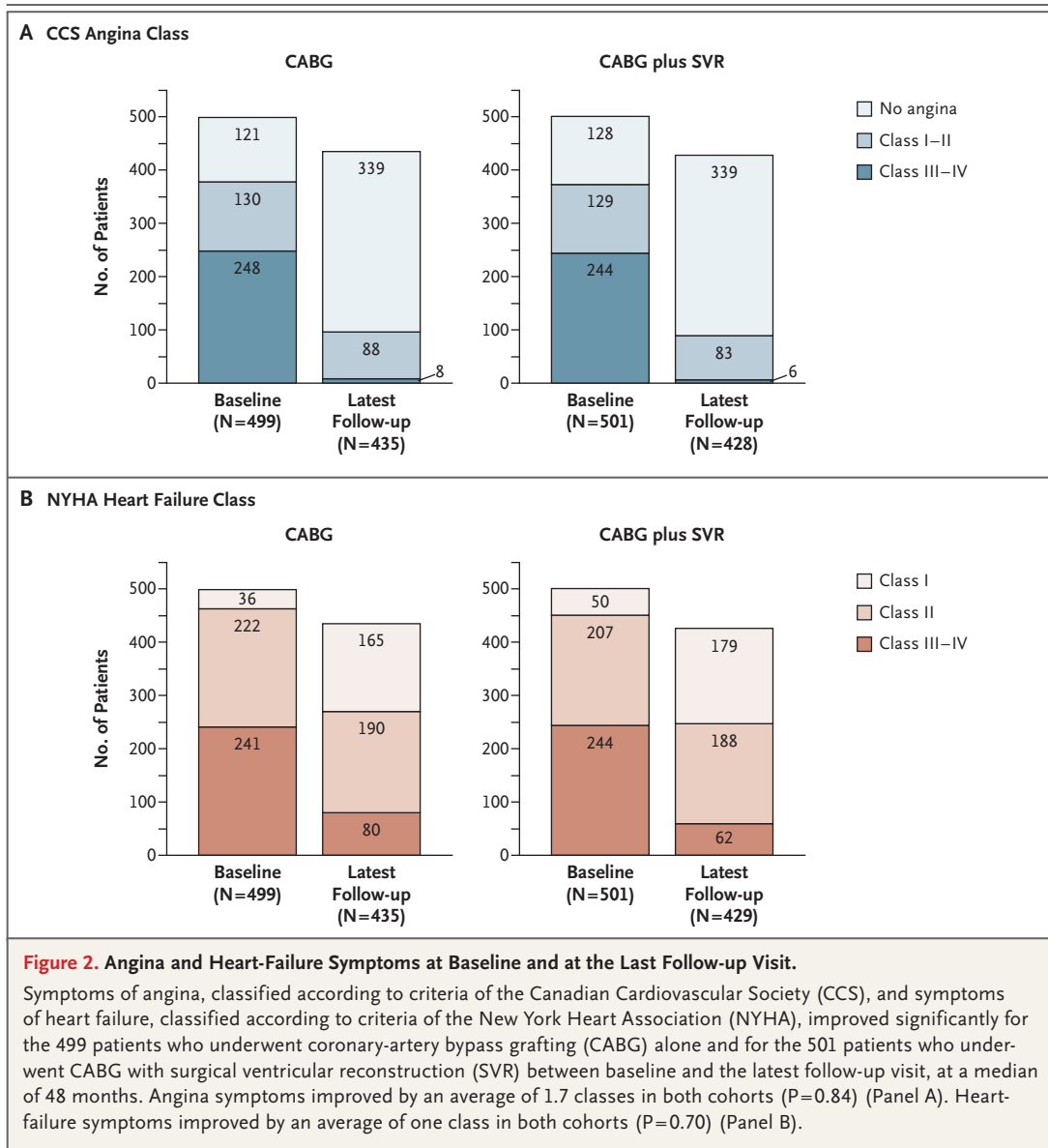
Table 1. (Continued.)		
Variable	CABG Alone (N=499)	CABG with Surgical Ventricular Reconstruction (N=501)
Baseline laboratory measure		
Creatinine — mg/dl		
Median	1.1	1.1
Interquartile range	0.9–1.3	0.9–1.3
Left ventricular function		
Left ventricular ejection fraction — %		
Median	28	28
Interquartile range	23–31	24–31
End-systolic volume index — ml/m ²		
Median	82	82
Interquartile range	65–102	66–105
Akinesia or dyskinesia of anterior wall — %		
Median	56	50
Interquartile range	40–60	40–60
Mitral regurgitation — no. (%)‡		
None or trace	173 (35)	190 (38)
Mild (≤2+)	233 (47)	216 (43)
Moderate (3+)	72 (14)	70 (14)
Severe (4+)	16 (3)	20 (4)
Not assessed	5 (1)	5 (1)
Coronary anatomy		
No. of vessels with stenosis of ≥50% — no. (%)		
One	36 (7)	51 (10)
Two	144 (29)	131 (26)
Three	319 (64)	319 (64)
Stenosis of left main coronary artery — no. (%)		
50–74%	72 (14)	61 (12)
≥75%	31 (6)	33 (7)
≥75% Stenosis of proximal left anterior descending coronary artery — no. (%)	388 (78)	369 (74)
Duke Coronary Artery Disease Severity Index§		
Median — %	65	65
Interquartile range — %	43–91	39–91
Medication at baseline — %		
Beta-blocker	85	87
ACE inhibitor or angiotensin-receptor blocker	87	89
ACE inhibitor	80	82
Digoxin	17	14
Diuretic	69	66
Aspirin	77	77
Aspirin or warfarin	81	83
Statin	79	75

* P>0.05 for all between-group comparisons. The body-mass index is the weight in kilograms divided by the square of the height in meters. ACE denotes angiotensin-converting enzyme, and CABG coronary-artery bypass grafting.

† Race was self-reported.

‡ Mitral regurgitation was rated with the use of color Doppler and semiquantitative methods.

§ The Duke Coronary Artery Disease Severity Index ranges from 0 to 100, with higher values indicating greater severity.



difference between the two groups in the change from baseline was significant ($P<0.001$).

SYMPTOMS

Among patients in both study groups, the proportion with no angina increased and the proportion with CCS class III or IV angina decreased during the interval from baseline to the last follow-up visit (Fig. 2A). The symptoms of patients in both study groups improved by an average of 1.7 classes ($P=0.84$ for the difference between the two groups in the change from baseline). Likewise, in the two groups, the proportion with New York Heart As-

sociation (NYHA) class I heart failure (no symptoms) increased and the proportion with class III or IV heart failure decreased during the interval from baseline to the last follow-up visit (Fig. 2B). The symptoms in the two study groups improved by an average of one NYHA class ($P=0.70$ for the difference between the two groups in the change from baseline).

6-MINUTE WALK TEST

In the two study groups, approximately three quarters of patients performed the 6-minute walk test at baseline, and a similar proportion did so at

Table 2. Outcomes and Subsequent Procedures.*

Variable	CABG Alone (N = 499)	CABG with Surgical Ventricular Reconstruction (N = 501)	Hazard Ratio (95% CI)	P Value
	<i>number (percent)</i>			
Outcome				
Death from any cause or hospitalization for cardiac causes	292 (59)	289 (58)	0.99 (0.84–1.17)	0.90
Death from any cause	141 (28)	138 (28)	1.00 (0.79–1.26)	0.98
Death from any cause within 30 days after randomization (intention-to-treat analysis)	22 (4)	30 (6)		0.26
Death from any cause within 30 days after surgery†				
Intention-to-treat analysis	25 (5)	26 (5)		0.88
As-treated analysis	23 (5)	28 (6)		0.40
Hospitalization				
For any cause	272 (55)	268 (53)	0.98 (0.83–1.16)	0.82
For cardiac causes	211 (42)	204 (41)	0.97 (0.80–1.18)	0.73
Acute myocardial infarction	22 (4)	20 (4)	1.01 (0.54–1.87)	0.96
Stroke	31 (6)	23 (5)	0.77 (0.45–1.32)	0.35
Subsequent procedure‡				
CABG	0	1 (<1)		
Placement of left ventricular assist device	2 (<1)	2 (<1)		
Heart transplantation	2 (<1)	7 (1)		
Percutaneous coronary intervention	32 (6)	17 (3)		
Placement of pacemaker				
For resynchronization	31 (6)	30 (6)		
For heart rate	44 (9)	47 (9)		
Placement of implantable cardioverter–defibrillator	100 (20)	86 (17)		

* Hazard ratios are for coronary-artery bypass grafting (CABG) with surgical ventricular reconstruction as compared with CABG alone.

† For the analysis of death within 30 days after surgery, in the group that was assigned to undergo CABG alone, 490 patients were evaluated in the intention-to-treat analysis and 498 patients in the as-treated analysis; in the group that was assigned to undergo CABG with surgical ventricular reconstruction, 489 patients were evaluated in the intention-to-treat analysis and 481 patients in the as-treated analysis.

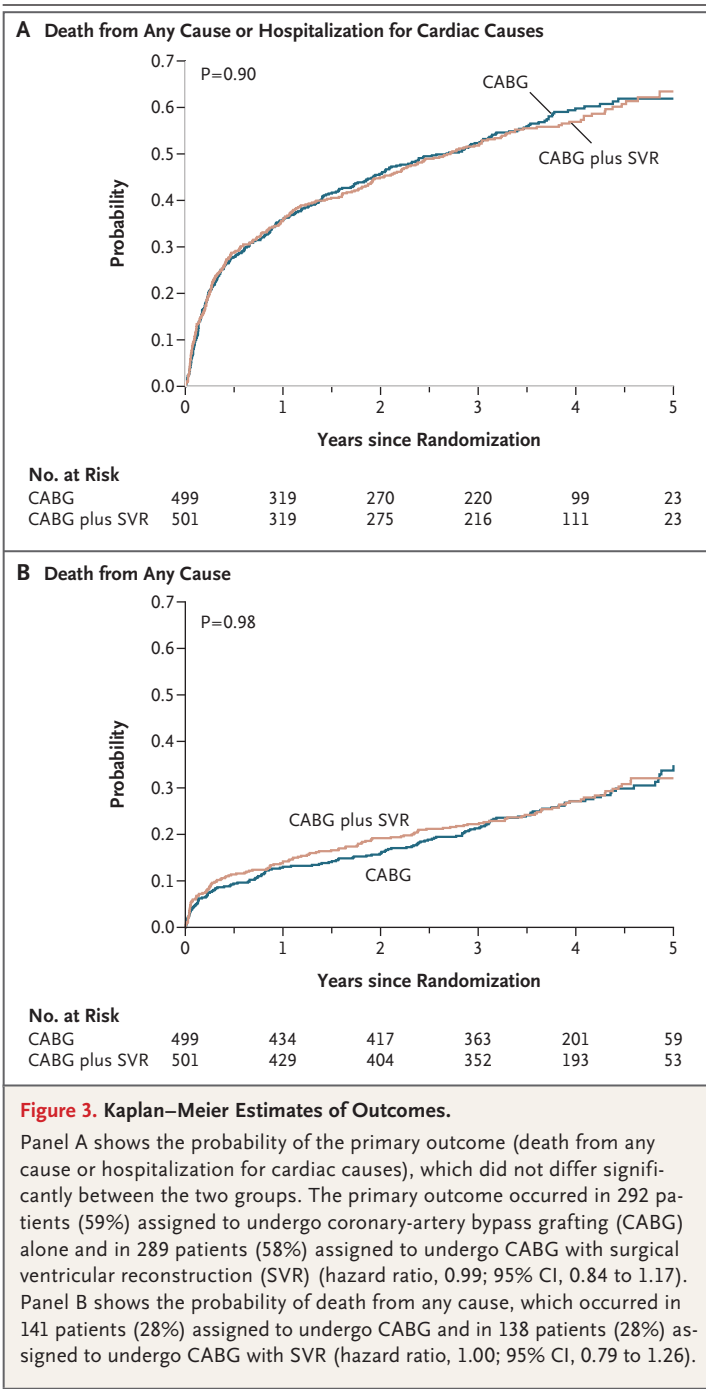
‡ Hazard ratios and P values are not provided for subsequent procedures because of the low incidence of these events.

4 months (Fig. 2 in the Supplementary Appendix). The median distance walked was 350 m at baseline and 350 m at 4 months for patients assigned to undergo CABG and 358 m at baseline and 410 m at 4 months for those assigned to undergo CABG with surgical ventricular reconstruction. The increase in the median distance walked was similar in the two groups (48 m among patients who were assigned to undergo CABG and 52 m among patients assigned to undergo CABG with surgical ventricular reconstruction, $P=0.80$). Among patients assigned to undergo CABG who performed the 6-minute walk test and were assessed for symptoms, 34% were symptomatic during the base-

line test and 9% were symptomatic at 4 months. The corresponding rates among patients assigned to undergo CABG with surgical ventricular reconstruction were 33% and 11%.

PRIMARY OUTCOME

The primary outcome of death from any cause or hospitalization for cardiac causes occurred in 292 of 499 patients (59%) assigned to undergo CABG and in 289 of 501 patients (58%) assigned to undergo CABG with surgical ventricular reconstruction (hazard ratio for the combined approach, 0.99; 95% confidence interval [CI], 0.84 to 1.17; $P=0.90$) (Table 2 and Fig. 3A). Fatal events of any



cause occurred in 141 patients (28%) assigned to undergo CABG and in 138 patients (28%) assigned to undergo CABG with surgical ventricular reconstruction (hazard ratio, 1.00; 95% CI, 0.79 to 1.26; $P=0.98$) (Table 2 and Fig. 3B). Hospitalization for cardiac causes occurred in 211 patients (42%) and in 204 patients (41%), respectively ($P=0.73$). Haz-

ard-ratio plots showed no interaction for the primary outcome between study-group assignment and baseline characteristics of interest (Fig. 4).

SECONDARY OUTCOMES AND EVENTS

Operative rates of death (i.e., deaths occurring within 30 days after the procedure) did not differ significantly between the two study groups, according to either the intention-to-treat analysis or the as-treated analysis (Table 2). The rates of seven secondary procedures, of acute myocardial infarction ($P=0.96$), and of stroke ($P=0.35$) were low and similar in the two groups.

DISCUSSION

We compared the efficacy of CABG alone with that of CABG combined with surgical ventricular reconstruction in patients with coronary artery disease and left ventricular systolic dysfunction. As anticipated, the addition of surgical ventricular reconstruction resulted in a significantly greater reduction in left ventricular volume than was achieved with CABG alone. However, this improvement in ventricular volume did not translate into a measurable benefit for the patients. Symptomatic improvement after surgery was similar in the two study groups. There was no significant between-group difference in the primary outcome of death or hospitalization for cardiac causes or in any other clinical outcome. Operative, intubation, and initial hospitalization times were longer in patients treated with the combined procedure. The findings of this study do not support the use of surgical ventricular reconstruction in the population studied.

Two reasons might be offered for the negative outcome of this trial. Perhaps experienced surgeons decided to enroll patients for whom they recognized that surgical ventricular reconstruction would prove unnecessary but offered this procedure directly, instead of enrollment in the trial, to all concurrently evaluated patients for whom they were confident the procedure would be beneficial. Making such precise decisions about patient selection is not consistent with the diverse opinions about the eligibility of specific patients for randomized assignment to surgical ventricular reconstruction, as discussed at STICH investigator meetings. Participating investigators appeared to make randomization decisions from a broad spectrum of positions of equipoise on the basis of dif-

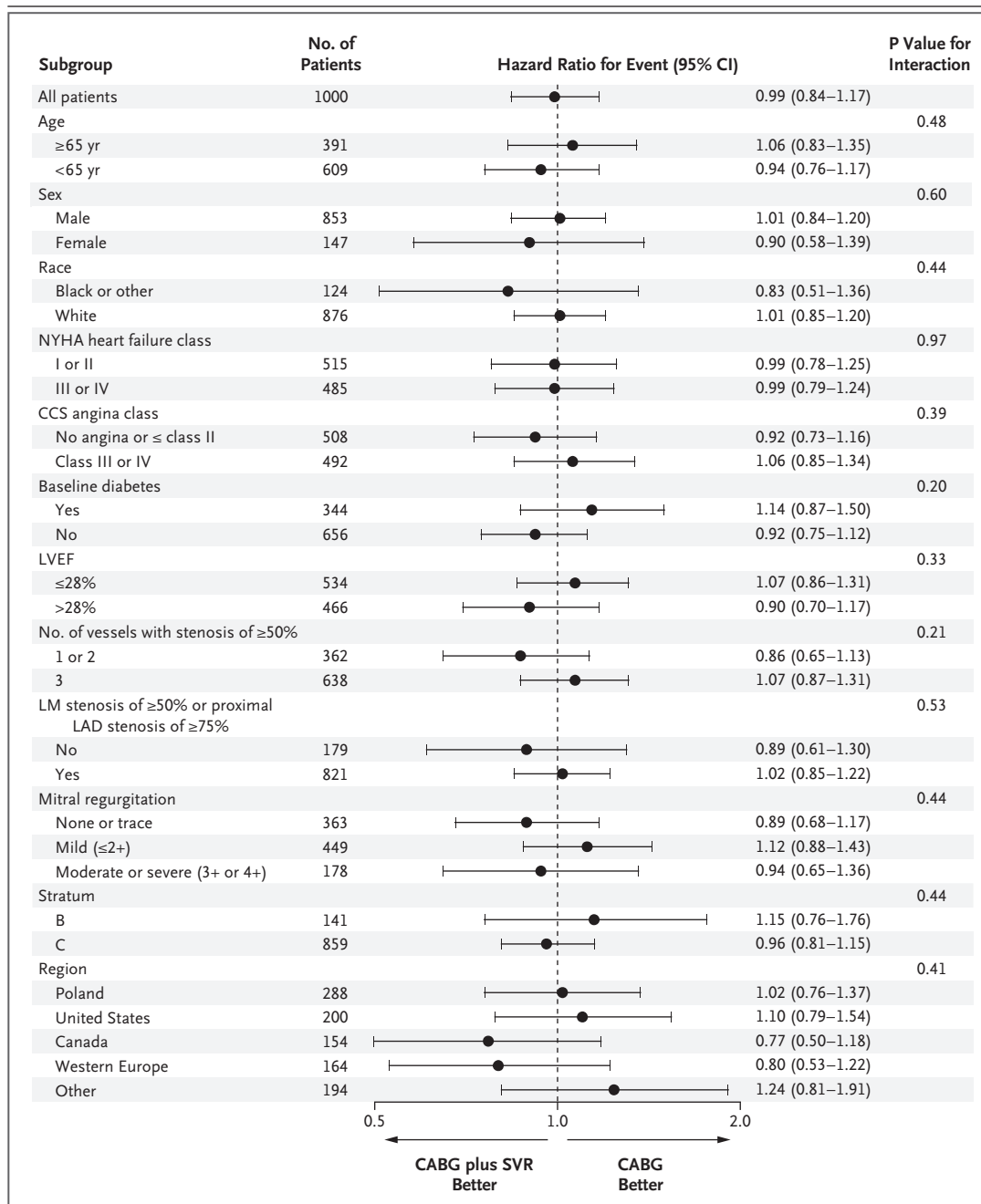


Figure 4. Primary Outcome in Subgroups of Interest.

Hazard-ratio plots for selected characteristics of patients at baseline show no significant interaction with the study-group assignment. CABG denotes coronary-artery bypass grafting, CCS Canadian Cardiovascular Society, LAD left anterior descending coronary artery, LM left main coronary artery, LVEF left ventricular ejection fraction, NYHA New York Heart Association, and SVR surgical ventricular reconstruction.

ferences in judgment in weighing baseline clinical and imaging characteristics of potential participants in the trial.

The more plausible reason for the lack of ben-

efit seen with surgical ventricular reconstruction is that benefits anticipated from surgical reduction of left ventricular volume (reduced wall stress and improvement in systolic function) are counter-

balanced by a reduction in diastolic distensibility. Previous work has shown that an important predictor of survival in patients with systolic dysfunction is the left ventricular ejection fraction during exercise.²³ The most favorable dynamic response of the ventricle to the demand for increased cardiac output is associated with both an increase in end-diastolic volume and a decrease in end-systolic volume. Surgical ventricular reconstruction may impede this enhanced filling response.

One limitation of the design of the STICH trial was that physicians and surgeons caring for patients were aware of the treatment received. We sought to mitigate this limitation as much as possible by seeking complete follow-up for all patients and by selecting trial end points that were not primarily subjective ones. It is conceivable that the decision to hospitalize a patient during the follow-up period could have been influenced by the physician's knowledge of the specific operation performed. However, rates of death, myocardial infarction, and stroke were similar in the two study groups.

A total of 83 of 1000 patients (8%) did not receive the assigned treatment. Patients who were

identified before randomization as eligible for either treatment could be expected to have a higher preoperative crossover rate than patients for whom one operative strategy was preferred. Moreover, physician-directed crossovers were similar in the two study groups. Analyses that were performed on the intention-to-treat principle and according to the surgery received had similar results.

In summary, our trial compared the efficacy of CABG alone with that of CABG with surgical ventricular reconstruction in patients with coronary artery disease and left ventricular systolic dysfunction. There was no significant difference between the two study groups in the degree of symptom improvement or in the rate of death or hospitalization for cardiac causes.

Supported by grants (5U01-HL-69015, 5U01-HL-69013, and 5U01-HL-69010) from the National Heart, Lung, and Blood Institute.

Dr. Velazquez reports receiving grant support from Cardiokinetix; Dr. O'Connor, receiving grant support from Scios and NovaCardia; and Dr. Rouleau, receiving consulting fees from Novartis, Pfizer, and Scios. No other potential conflict of interest relevant to this article was reported.

We thank Vanessa Moore for her assistance in the preparation of the manuscript and Kerry Bassett and Anthony Doll for their work in the initial preparation of the figures.

REFERENCES

- Hunt SA, Abraham WT, Chin MH, et al. ACC/AHA 2005 guideline update for the diagnosis and management of chronic heart failure in the adult: a report of the American College of Cardiology/American Heart Association Task Force on Practice Guidelines (Writing Committee to Update the 2001 Guidelines for the Evaluation and Management of Heart Failure): developed in collaboration with the American College of Chest Physicians and the International Society for Heart and Lung Transplantation: endorsed by the Heart Rhythm Society. *Circulation* 2005;112(12):e154-e235.
- Bax JJ, van der Wall EE, Harbinson M. Radionuclide techniques for the assessment of myocardial viability and hibernation. *Heart* 2004;90:Suppl 5:v26-v33.
- Eagle KA, Guyton RA, Davidoff R, et al. ACC/AHA 2004 guideline update for coronary artery bypass graft surgery: a report of the American College of Cardiology/American Heart Association Task Force on Practice Guidelines (Committee to Update the 1999 Guidelines for Coronary Artery Bypass Graft Surgery). *Circulation* 2004;110(14):e340-e437. [Erratum, *Circulation* 2005;111:2014.]
- Sutton MGS, Sharpe N. Left ventricular remodeling after myocardial infarction: pathophysiology and therapy. *Circulation* 2000;101:2981-8.
- Cohn JN, Ferrari R, Sharpe N. Cardiac remodeling — concepts and clinical implications: a consensus paper from an international forum on cardiac remodeling. *J Am Coll Cardiol* 2000;35:569-82.
- Pfeffer MA, Lamas GA, Vaughan DE, Parisi AF, Braunwald E. Effect of captopril on progressive ventricular dilatation after anterior myocardial infarction. *N Engl J Med* 1988;319:80-6.
- Greenberg B, Quinones MA, Koilpillai C, et al. Effects of long-term enalapril therapy on cardiac structure and function in patients with left ventricular dysfunction: results of the SOLVD echocardiography substudy. *Circulation* 1995;91:2573-81.
- Doughty RN, Whalley GA, Gamble G, MacMahon S, Sharpe N. Left ventricular remodeling with carvedilol in patients with congestive heart failure due to ischemic heart disease. *J Am Coll Cardiol* 1997;29:1060-6.
- Doughty RN, Whalley GA, Walsh HA, Gamble GD, López-Sendón J, Sharpe N. Effects of carvedilol on left ventricular remodeling after acute myocardial infarction: the CAPRICORN Echo Substudy. *Circulation* 2004;109:201-6.
- Alfieri O, Maisano F, Schreuder JJ. Surgical methods to reverse left ventricular remodeling in congestive heart failure. *Am J Cardiol* 2003;91:Suppl 9A:81F-87F.
- Athanasuleas CL, Stanley AWH Jr, Buckberg GD. Restoration of contractile function in the enlarged left ventricle by exclusion of remodeled akinetic anterior segment: surgical strategy, myocardial protection, and angiographic results. *J Card Surg* 1998;13:418-28.
- Athanasuleas CL, Buckberg GD, Stanley AWH, et al. Surgical ventricular restoration in the treatment of congestive heart failure due to post-infarction ventricular dilation. *J Am Coll Cardiol* 2004;44:1439-45.
- Menicanti L, Castelvécchio S, Ranucci M, et al. Surgical therapy for ischemic heart failure: single-center experience with surgical anterior ventricular restoration. *J Thorac Cardiovasc Surg* 2007;134:433-41.
- Prucz RB, Weiss ES, Patel ND, Nwankanna LU, Baumgartner WA, Conte JV.

- Coronary artery bypass grafting with or without surgical ventricular restoration: a comparison. *Ann Thorac Surg* 2008;86:806-14.
15. Velazquez EJ, Lee KL, O'Connor CM, et al. The rationale and design of the Surgical Treatment for Ischemic Heart Failure (STICH) trial. *J Thorac Cardiovasc Surg* 2007;134:1540-7.
16. Jones RH. Is it time for a randomized trial of surgical treatment of ischemic heart failure? *J Am Coll Cardiol* 2001;37:1210-3.
17. Athanasuleas CL, Stanley AWH Jr, Buckberg GD, Dor V, Di Donato M, Blackstone EH. Surgical anterior ventricular endocardial restoration (SAVER) in the dilated remodeled ventricle after anterior myocardial infarction. *J Am Coll Cardiol* 2001;37:1199-209.
18. Kaplan EL, Meier P. Nonparametric estimation from incomplete observations. *J Am Stat Assoc* 1958;53:457-81.
19. Kalbfleisch JD, Prentice RL. *The statistical analysis of failure time data*. 2nd ed. New York: John Wiley, 2002.
20. Cox DR. Regression models and life-tables. *J R Stat Soc [B]* 1972;34:187-220.
21. O'Brien PC, Fleming TR. A multiple testing procedure for clinical trials. *Biometrics* 1979;35:549-56.
22. Lan KKG, DeMets DL. Discrete sequential boundaries for clinical trials. *Biometrika* 1983;79:659-63.
23. Lee KL, Pryor DB, Pieper KS, et al. Prognostic value of radionuclide angiography in medically treated patients with coronary artery disease: a comparison with clinical and catheterization variables. *Circulation* 1990;82:1705-17.

Copyright © 2009 Massachusetts Medical Society.

FULL TEXT OF ALL JOURNAL ARTICLES ON THE WORLD WIDE WEB

Access to the complete text of the *Journal* on the Internet is free to all subscribers. To use this Web site, subscribers should go to the *Journal's* home page ([NEJM.org](http://www.nejm.org)) and register by entering their names and subscriber numbers as they appear on their mailing labels. After this one-time registration, subscribers can use their passwords to log on for electronic access to the entire *Journal* from any computer that is connected to the Internet. Features include a library of all issues since January 1993 and abstracts since January 1975, a full-text search capacity, and a personal archive for saving articles and search results of interest. All articles can be printed in a format that is virtually identical to that of the typeset pages. Beginning 6 months after publication, the full text of all Original Articles and Special Articles is available free to nonsubscribers.

Supplementary Appendix

This appendix has been provided by the authors to give readers additional information about their work.

Supplement to: Jones RH, Velazquez EJ, Michler RE, et al. Coronary bypass surgery with or without surgical ventricular reconstruction. *N Engl J Med* 2009;360:1705-17. DOI: 10.1056/NEJMoa0900559.

Coronary Bypass Surgery with or without Surgical Ventricular Reconstruction

Online Supplementary Appendix

Robert H. Jones, M.D., Eric J. Velazquez, M.D., Robert E. Michler, M.D., George Sopko, M.D., Jae K. Oh, M.D., Christopher M. O'Connor, M.D., James A. Hill, M.D., Lorenzo Menicanti, M.D., Zygmunt Sadowski, M.D., Patrice Desvigne-Nickens, M.D., Jean-Lucien Rouleau, M.D., Kerry L. Lee, Ph.D.
for the STICH Hypothesis 2 Investigators

Division of Cardiothoracic Surgery/Department of Surgery, Duke Clinical Research Institute, Duke University Medical Center, Durham, North Carolina (RHJ);
Division of Cardiovascular Medicine/Department of Medicine, Duke Clinical Research Institute, Duke University Medical Center, Durham, North Carolina (EJV, CMO);
Department of Cardiothoracic Surgery and Department of Surgery, Montefiore Medical Center/Albert Einstein College of Medicine, Bronx, New York (REM); Division of Cardiovascular Diseases, National Heart, Lung, and Blood Institute, National Institutes of Health, Bethesda, Maryland (GS, PD-N); Division of Cardiovascular Diseases, Department of Internal Medicine, Mayo Clinic, Rochester, Minnesota (JKO); Division of Cardiovascular Medicine, University of Florida College of Medicine, Gainesville, Florida (JAH); Department of Cardiac Surgery, San Donato Hospital, Milan, Italy (LM); National Institute of Cardiology, Warsaw, Poland (ZS); Institut de Cardiologie de Montreal, University of Montreal, Montreal, Canada (JLR); Department of Biostatistics and Bioinformatics, Duke Clinical Research Institute, Duke University Medical Center, Durham, North Carolina (KLL)

Address for Correspondence:

Robert H. Jones, M.D.
Mary and Deryl Hart Professor of Surgery
P. O. Box 2986, Duke University Medical Center
Durham, NC 27710
Telephone: 919-668-8357
Fax: 919-684-5700
Email: jones060@mc.duke.edu

Hypothesis 2 Investigators and Trial Committees

The following institutions and principal investigators (PI), lead surgeons (LS), lead cardiologists (LC), and study coordinators (SC) participated in STICH Hypothesis 2 enrollment: **Investigators** (listed in descending order of the number of randomized patients): Slaski Osrodek Kardiologii, Katowice, Poland: A. Bochenek-PI, M. Krejca-LS, M. Trusz-Gluza-LC, K. Wita-SC; Silesian Medical Academy, Zabrze, Poland: M. Zembala-PI, R. Przybylski-LS, T. Kukulski-SC; Research Institute of Circulation Pathology, Novosibirsk, Russia: A. Cherniavsky-PI, A. Marchenko-LS, A. Romanov-SC; Medical University of Silesia, Katowice, Poland: S. Wos-PI, M. Deja-LS, K. Golba-LC, J. Kot-SC; Toronto General Hospital, Toronto, Canada: V. Rao-PI, M. Iwanochko-LC, J. Renton-SC, S. Hemeon-SC; Medical University of Gdansk, Gdansk, Poland: J. Rogowski-PI, A. Rynkiewicz-LC, P. Betlejewski-SC; Ohio State University Medical Center, Columbus, USA: B. Sun-PI, J. Crestanello-LS, P. Binkley-LC, J. Chang-SC; Ospedali Riuniti di Bergamo, Bergamo, Italy: P. Ferrazzi-PI, A. Gavazzi-LC, M. Senni-SC; John Paul II Hospital, Krakow, Poland: J. Sadowski-PI, B. Kapelak-LS, D. Sobczyk-LC, K. Wrobel-SC; Institute for Clinical and Experimental Medicine, Prague, Czech Republic: J. Pirk-PI, R. Jandova-SC; Duke University Medical Center, Durham, USA: E. Velazquez-PI, P. Smith-LS, C. Milano-LS, P. Adams-SC; San Donato Hospital, Milan, Italy: L. Menicanti-PI, M. Di Donato-LC, S. Castelvechio-SC; Laval Hospital, Sainte Foy, Canada: F. Dagenais-PI, G. Dussault-SC; University of North Carolina Hospitals, Chapel Hill, USA: C. Dupree-PI, B. Sheridan-LS, C. Schuler-SC; St. Vincent's Hospital Melbourne, Melbourne, Australia: M. Yii-PI, D. Prior-LC, J. Mack-SC; Montreal Heart Institute, Montreal, Canada: N. Racine-PI, D. Bouchard-LS, A. Ducharme-LC, J. Lavoignat-SC; University of Vienna Allgemeines Krankenhaus, Vienna, Austria: G. Maurer-PI, M. Grimm-LS, I. Lang-LC, C. Adlbrecht-SC; National Institute of Cardiology, Warsaw, Poland: Z. Religa-PI, A. Biederman-LS, H. Szwed-LC, Z. Sadowski-SC; Capital Health Queen Elizabeth II Health Sciences Centre, Halifax, Canada: M. Rajda-PI, I. Ali-LS, J. Howlett-LC, M. MacFarlane-SC; University of Freiburg, Freiburg, Germany: M. Siepe-PI, F. Beyersdorf-LS, C. Cuerten-SC; Katedra I Klinika Kardiologii, Szczecin, Poland: S. Wiechowski-PI, K. Mokrzycki-SC; Shands Hospital at the University of Florida, Gainesville, USA: J. Hill-PI, T. Beaver-LS, D. Olitsky-SC; Vancouver General Hospital, Vancouver, Canada: V. Bernstein-PI, M. Janusz-LS, V. O'Neill-SC; Baylor University Medical Center, Dallas, USA: P. Grayburn-PI, R. Hebler-LS, B. Hamman-LS, S. Aston-SC; Dedinje Cardiovascular Institute, Belgrade, Serbia: S. Gradinac-PI, M. Vukovic-LC, L. Djokovic-SC; Kaunas Medical University Clinics, Kaunas, Lithuania: R. Benetis-PI, L. Jankauskiene-SC; Martin Luther University, Halle, Germany: I. Friedrich-PI, M. Buerke-LC, A. Paraforos-SC; Poliambulanza Hospital, Brescia, Italy: E. Quaini-PI, M. Cirillo-SC; National Heart Centre Singapore, Singapore: L. Chua-PI, C. Lim-LS, B. Kwok-LC, S. Kong-SC; Hesperia Hospital, Modena, Italy: G. Stefanelli-PI, C. Labia-SC; Sahlgrenska University Hospital, Goteborg, Sweden: C. Bergh-PI, C. Gustafsson-SC; Mayo Clinic, Rochester, USA: R. Daly-PI, R. Rodeheffer-LC, S. Nelson-SC; Foothills Medical Centre, Calgary, Canada: A. Maitland-PI, D. Isaac-LC, M. Holland-SC; S. Giovanni Di Dio Ruggi D'Aragona Hospital, Salerno, Italy: G. Di Benedetto-PI, T. Attisano-SC; Universitat Schleswig-Holstein, Lubeck, Germany: H. Sievers-PI, H. Schunkert-LC, U. Stierle-SC; Ottawa Heart Institute, Ottawa, Canada: H. Haddad-PI, P. Hendry-LS, J. Donaldson-SC; Boston V.A. Healthcare System, West Roxbury, USA: V. Birjiniuk-PI, M. Harrington-SC; Chiang Mai University Hospital, Chiang Mai, Thailand: W. Nawarawong-PI, S. Woragidpunpol-LS, S. Kuanprasert-LC, W. Mekara-SC; Saint Mary's Duluth Clinic Health System, Duluth, USA: S. Konda-PI, C. Neva-SC; Mission Hospital, Inc., Asheville, USA: W. Hathaway-PI, M. Groh-LS, J. Blakely-SC; Hamilton General Hospital, Hamilton, Canada: A. Lamy-PI, C. Demers-LC, T. Rizzo-SC; University of Texas Southwestern Medical Center, Dallas, USA:

M. Drazner-PI, J. DiMaio-LS, J. Joy-SC; *Na Homolce Hospital, Prague, Czech Republic*: J. Benedik-PI, K. Marketa-SC; *Ospedale Maggiore, Parma, Italy*: C. Beghi-PI, M. De Blasi-SC; *Hopital Notre-Dame du CHUM, Montreal, Canada*: J. Helou-PI, S. Dallaire-SC; *University of Virginia Health System, Charlottesville, USA*: I. Kron-PI, J. Kern-LS, J. Bergin-LC, J. Phillips-SC; *University of Washington Medical Center, Seattle, USA*: G. Aldea-PI, E. Verrier-LS, L. Harrison-SC; *Instituto Dante Pazzanese de Cardiologia, Sao Paulo, Brazil*: L. Piegas-PI, P. Paulista -LS, P. Farsky-LC, C. Veiga-Kantorowitz-SC; *Boston Medical Center, Boston, USA*: G. Philippides-PI, R. Shemin-LS, J. Thompson-SC; *Auckland City Hospital, Auckland, New Zealand*: H. White-PI, P. Alison-LS, R. Stewart-LC, T. Clapham-SC; *Sentara Norfolk General Hospital, Norfolk, USA*: J. Rich-PI, J. Herre-LC, L. Pine-SC; *Fundacao Universitaria de Cardiologia, Porto Alegre, Brazil*: R. Kalil-PI, I. Nesralla-LS, M. Santos-LC, M. Pereira de Moraes-SC; *Montefiore Medical Center/Albert Einstein College of Medicine, Bronx, USA*: R. Michler-PI, R. Swayze-SC; *University Hospital-London Health Sciences Center, London, Canada*: M. Arnold-PI, N. McKenzie-LS, J. Smith-SC; *Instituto do Coração (InCor) - HC/FMUSP, Sao Paulo, Brazil*: J. Nicolau-PI, S. Oliveira-LS, N. Stolf-LS, M. Ferraz-SC; *Casa De Galicia, Montevideo, Uruguay*: J. Filgueira-PI, C. Battle-SC; *Hospital de Cardiologia de Laranjeiras, Rio de Janeiro, Brazil*: A. Rocha-PI, A. Gurgel Camara-SC; *Montreal General Hospital, Montreal, Canada*: T. Huynh-PI, R. Cecere-LS, S. Finkenbine-SC, B. St-Jacques-SC; *Royal Darwin Hospital, Darwin, Australia*: M. Ilton-PI, Johns Hopkins Hospital, Baltimore, USA: I. Wittstein-PI, J. Conte-LS, E. Breton-SC; *Washington Hospital Center, Washington, DC, USA*: J. Panza-PI, S. Boyce-LS, M. McNulty-SC; *Los Angeles County and University of Southern California Medical Center, Los Angeles, USA*: V. Starnes-PI, B. Lopez-SC; *Allegheny General Hospital, Pittsburgh, USA*: R. Biederman-PI, J. Magovern-LS, D. Dean-LS, S. Grant-SC; *Wake Forest University Health Services, Winston-Salem, USA*: J. Hammon-PI, G. Wells-LC, Flinders Medical Centre, Adelaide, Australia: C. De Pasquale-PI, J. Knight-LS, H. Healy-SC; *Hospital de Base da Faculdade de Medicina de Sao Jose Rio Preto, Sao Paulo, Brazil*: L. Maia-PI, A. Souza-SC; *Heartcare Mid West, Peoria, USA*: R. McRae-PI, M. Pierson-SC; *Rikshospitalet HF, Oslo, Norway*: L. Gullestad-PI, G. Sorensen-SC; *Portland V.A. Medical Center, Portland, USA*: E. Murphy-PI, P. Ravichandran-LS, K. Avalos-SC; *Queen Elizabeth Hospital, Woodville, Australia*: J. Horowitz-PI, E. Owen-SC; *Columbia University Medical Center, New York, USA*: D. Ascheim-PI, Y. Naka-LS, M. Yushak-SC; *Humanitas-Gavazzeni, Bergamo, Italy*: P. Gerometta-PI, V. Arena-LS, E. Borghini-SC; *Lund University Hospital, Lund, Sweden*: P. Johnsson-PI, B. Ekmehag-LC, K. Engels-SC; *Westchester Medical Center-New York Medical College, Valhalla, USA*: W. Rosenblum-PI, R. Swayze-SC; *Albert Einstein Medical Center, Philadelphia, USA*: A. Amanullah-PI, *Instytut Kardiologii AM, Lodz, Poland*: M. Krzeminska-Pakula-PI, J. Drozd-SC; *Royal Perth Hospital, Perth, Australia*: R. Larbalestier-PI, X. Wang-SC; *National Medical Center, Budapest, Hungary*: C. Busmann-SC; *George Gottsegen National Institute of Cardiology, Budapest, Hungary*: F. Horkay-PI, L. Szekely-LS, M. Keltai-LC, *German Heart Institute Berlin-DHQB, Berlin, Germany*: R. Hetzer-PI, C. Knosalla-LS, T. Nienkarken-SC; *Policlinico Tor Vergata of Rome, Rome, Italy*: L. Chiariello-PI, P. Nardi-SC; *Bangkok Heart Hospital, Bangkok, Thailand*: K. Arom-PI, P. Ruengsakulrach-SC; *St. Vincent's Hospital Sydney, Sydney, Australia*: C. Hayward-PI, P. Jansz-LS, S. Stuart-SC; *Dokuz Eylul University, Balçova, Turkey*: O. Oto-PI, O. Sariomanoglu-SC; *Liverpool Hospital, Liverpool, Australia*: R. Dignan-PI, J. French-LC, M. Gonzalez-SC; *University of Debrecen Medical and Health Science Center, Debrecen, Hungary*: I. Edes-PI, V. Szathmarine-SC; *National Heart Institute, Kuala Lumpur, Malaysia*: M. Yakub-PI, S. Sarip-SC; *Zala County Hospital and Pécs University, Zalaegerszeg, Hungary*: N. Alotti-PI, G. Lupkovics-SC; *Cleveland Clinic Foundation, Cleveland, USA*: N. Smedira-PI, J. Pryce-SC; *Onassis Cardiac Surgery Center, Athens, Greece*: D. Cokkinos-PI, G.

Palatianos-LS, D. Kremastinos-LC; University Hospitals of Cleveland, Cleveland, USA; R. Stewart-PI, L. Rinke-SC; University of Medicine and Dentistry of New Jersey-Newark, Newark, USA; B. Esrig-PI, M. Baptiste-SC; University of Kentucky Gill Heart Institute, Lexington, USA; D. Booth-PI, C. Ramaiah-LS, V. Ferraris-LS; Lindner Clinical Trial Center, Cincinnati, USA; S. Menon-PI, L. Martin-SC; Brigham and Women's Hospital, Boston, USA; G. Couper-PI, D. Rosborough-SC; UZ Gasthuisberg/University Hospitals, Leuven, Belgium; J. Vanhaecke-PI, A. Strijckmans-SC; **CEC Endpoint Committee:** P. Carson (chair), C. Dupree, A. Miller, I. Pina, C. Selzman, J. Wertheimer; **Data and Safety Monitoring Board:** S. Goldstein (chair), F. Cohn, M. Hlatky, K. Kennedy, S. Rankin, R. Robbins, B. Zaret; **Executive Council:** J. Rouleau (chair), P. Desvigne-Nickens, R. Jones, K. Lee, R. Michler, C. O'Connor, J. Oh, G. Rankin, E. Velazquez; Policy and Publication Committee: J. Hill (chair), F. Beyersdorf, R. Bonow, P. Desvigne-Nickens, R. Jones, K. Lee, J. Oh, J. Panza, J. Rouleau, Z. Sadowski, E. Velazquez, H. White; **Coordinating Center Clinical Leadership:** R. Jones, E. Velazquez, C. O'Connor; **Project Management:** G. Rankin, M. Sellers; **Site Management:** B. Sparrow-Parker, A. McCormick, J. Albright, R. Dandridge, L. Rittenhouse; **Data Management:** D. Wagstaff, N. Wakeley, S. Burns, M. Williams, D. Bailey, L. Parrish, H. Daniels, G. Grissom, K. Medlin; **Statistics:** K. Lee, L. She, A. McDaniel, Y. Lokhnygina; **Clinical Events Coordination:** D. Greene; **Project Support:** V. Moore; **Cardiac Magnetic Resonance Core Laboratory:** G. Pohost (director), S. Agarwal, P. Apte, P. Bahukha, M. Chow, X. Chu, M. Doyle, J. Forder, M. Ocon, V. Reddy, N. Santos, R. Tripathi, P. Varadarajan; **Echocardiography Core Laboratory:** J. Oh (director), F. Blahnik, C. Bruce, G. Lin, B. Manahan, D. Miller, F. Miller, P. Pellikka, R. Springer, J. Welper, H. Wiste; **Economics and Quality of Life Core Laboratory:** D. Mark (director), K. Anstrom, K. Baloch, A. Burnette, N. Clapp-Channing, P. Cowper, N. Davidson-Ray, L. Drew, T. Harding, V. Hunt, D. Knight, A. Patterson, T. Redick, B. Sanderford; **Neurohormone-Cytokine-Genetics Core Laboratory:** A. Feldman (director), M. Bristow, T. Chan, M. Diamond, A. Maisel, D. Mann, D. McNamara; **Radionuclide Core Laboratory:** R. Bonow (director), D. Berman, D. Helmer, T. Holly, S. Leonard, M. Woods; **DECIPHER Ancillary Study:** J. Panza (director), M. McNulty; **MR TEE Ancillary Study:** P. Grayburn (director), S. Aston.

ONLINE APPENDIX TABLE 1: HYPOTHESIS 2 COMPLIANCE WITH TREATMENT ASSIGNED BY RANDOMIZATION

499 Patients Assigned CABG			501 Patients Assigned CABG + SVR	
Reason	Patients		Patients	Reason
Cardiac	1	died before operation	5	3 definite cardiac cause
4 patients declined 3 patients worsened 1 provider decision	8	no operation at one year	7	5 patients declined 1 patient worsened 1 provider decision
8 provider decision	8	alternate operation chosen before operation	12	7 provider decision 2 patients declined 3 miscommunication
6 operative difficulty 13 operative finding	19	alternate operation chosen during operation	23	4 operative difficulty 19 operative finding
	36	did not receive assigned operation	47	
	463 (92.8%)	assigned operation performed	454 (90.6%)	
		917 (91.7%) of patients received operation assigned		

ONLINE APPENDIX TABLE 2: OPERATIVE CONDUCT BY TREATMENT ARM (as randomized)

Variables	CABG (N = 490)	CABG with SVR (N = 489)	P
<i>Surgical Data</i>			
Acuteness at operation			
Elective	413 (84%)	406 (83%)	0.54
Urgent	62 (13%)	65 (13%)	
Ongoing ischemia	9 (2%)	12 (2%)	
Hemodynamic instability	2 (0.4%)	2 (0.4%)	
Salvage	3 (0.6%)	4 (0.8%)	
Off-pump bypass	50 (10%)	6 (1%)	<0.001
Cardioplegia			
None	73 (15%)	13 (3%)	
Crystalloid	90 (18%)	116 (24%)	
Blood	307 (63%)	338 (69%)	
Both	19 (4%)	22 (4%)	
Number of conduits			0.49
1	40 (8%)	33 (7%)	
2	134 (27%)	156 (32%)	
3	214 (44%)	203 (42%)	
4	89 (18%)	86 (18%)	
5	11 (2%)	10 (2%)	
6 or more	2 (0.4%)	1 (0.2%)	
Number of arterial conduits			0.008
0	33 (7%)	56 (11%)	
1	403 (82%)	392 (80%)	
2	42 (9%)	31 (6%)	
3	12 (2%)	9 (2%)	
4	0	1 (0.2%)	
5 or more	0	0	

Number of venous conduits			0.59
0	52 (11%)	36 (7%)	
1	138 (28%)	150 (31%)	
2	199 (41%)	201 (41%)	
3	87 (18%)	84 (17%)	
4	11 (2%)	13 (3%)	
5	0	2 (0.4%)	
Other	2 (0.4%)	1 (0.2%)	
Number of distal anastomoses			0.34
0	0	0	
1	35 (7%)	36 (7%)	
2	95 (20%)	109 (22%)	
3	192 (40%)	188 (39%)	
4	123 (25%)	115 (24%)	
5	35 (7%)	33 (7%)	
6 or more	6 (1%)	6 (1%)	
Number of sequential grafts			0.87
0	345 (74%)	343 (74%)	
1	80 (17%)	79 (17%)	
2	24 (5%)	25 (5%)	
3	8 (2%)	8 (2%)	
4	2 (0.4%)	0	
5	0	0	
Other	7 (2%)	6 (1%)	
Other procedures (not including SVR)			
None	377 (77%)	366 (75%)	0.44
Mitral valve	85 (17%)	93 (19%)	0.50
Other	37 (8%)	39 (8%)	0.80
Types of procedures on mitral valve			0.034
Repair	76 (89%)	91 (98%)	
Bioprosthesis	4 (5%)	0	
Mechanical	5 (6%)	2 (2%)	

Prebypass time in OR, median (25 th , 75 th), hours	2.3 (1.8, 2.7)	2.3 (1.9, 2.8)	0.44
Time on bypass pump, median (25 th , 75 th), minutes	99 (73, 125)	124 (99, 158)	<0.001
Time on aortic crossclamp, median (25 th , 75 th), minutes	62 (45, 84)	80 (62, 106)	<0.001
Post-bypass time in OR, median (25 th , 75 th), hours	1.1 (0.9, 1.4)	1.1 (0.9, 1.4)	0.54
Total time in OR, median (25 th , 75%), hours	4.9 (4.1, 6.0)	5.5 (4.7, 6.6)	<0.001
Total intubation time, median (25 th , 75 th), hours	15.1 (10.9, 22.1)	16.6 (12.0, 25.2)	0.002
Total time in CCU/ICU, median (25 th , 75 th), hours	49.8 (28.8, 95.5)	69.5 (42.0, 137.3)	<0.001
Length of hospital stay after surgery, median (25 th , 75 th), days			
USA	7.0 (5.0, 10.0)	9.0 (7.0, 17.0)	
Canada	7.0 (6.0, 11.0)	7.0 (6.0, 9.0)	
Europe	10.0 (7.0, 14.0)	11.0 (8.0, 15.0)	
Asia-Pacific	7.0 (6.0, 10.0)	9.0 (7.0, 11.0)	
South America	7.0 (7.0, 10.0)	10.5 (9.0, 17.0)	
All	8.0 (6.0, 13.0)	9.0 (7.0, 14.0)	<0.001
Hospital stay longer than 30 days after surgery	22 (5%)	31 (6%)	0.20

SVR Data

Patients Randomized to SVR
(N = 501)

Received SVR	454 (91%)
Patch	267 (59%)
No patch	186 (41%)
Beating heart	44 (10%)
Cardioplegia	408 (90%)

Values are presented as number (%) unless otherwise indicated.

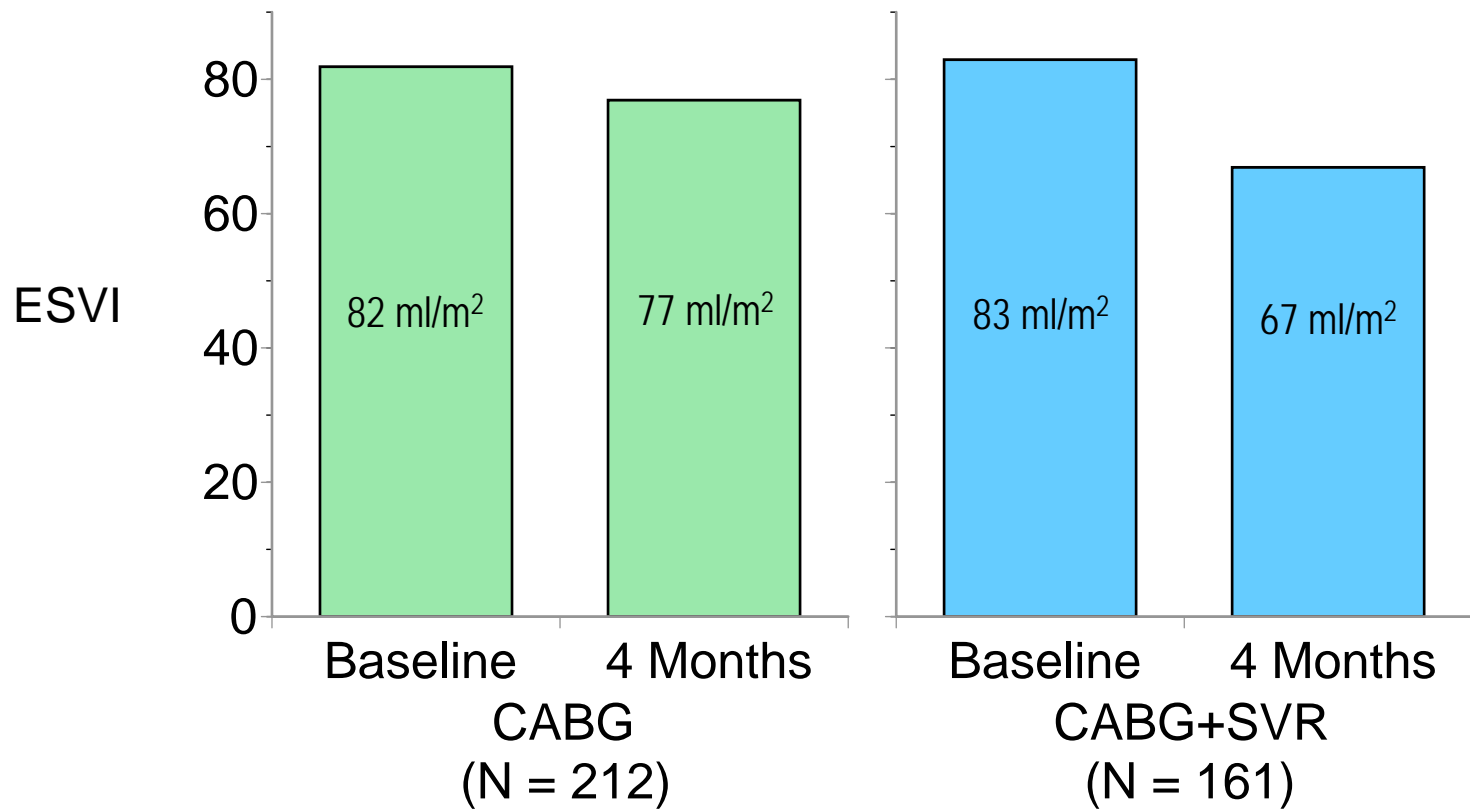
ONLINE APPENDIX FIGURE LEGENDS

Figure 1

Mean end-systolic volume index assessed by core laboratory quantitative echocardiogram in 373 patients at baseline and 4 months after CABG alone (N = 212) or CABG with surgical ventricular reconstruction (N = 161). The end-systolic volume enlargement at baseline was equivalent. However, CABG with surgical ventricular reconstruction reduced end-systolic volume index by 19% compared to a 6% decrease in the CABG only cohort ($p < 0.001$).

Figure 2

Six-minute walk at baseline in 1000 patients. (A) At baseline, both the CABG cohort (N = 499) and (B) CABG with surgical ventricular reconstruction cohort (N = 501) had similar numbers of patients unable to walk and symptomatic. At 4 months following CABG with or without surgical ventricular reconstruction, a similar increase in meters walked and decrease in symptomatic patients occurred in the two cohorts compared to baseline.



6-minute Walk

